



# Doranda College, Ranchi

## Student Satisfaction Survey Report

### (2023-2024)

#### Student Satisfaction Survey (SSS) Report (2023-2024)

Doranda College, established in 1962 and became constituent unit of Ranchi University in 1974. This Institution is committed to deliver quality education and fostering an environment of holistic development. This feedback report for the academic year 2023-2024 encapsulates the perspectives of students regarding various academic, co-curricular, and institutional aspects.

The report aims to analyze and reflect on the student responses to enhance teaching methodologies, learning experiences, and overall institutional quality. It also serves as a testament to the institution's dedication to student welfare and continuous quality improvement.

#### Overview

The feedback process for 2023-2024 collected insights from 1,013 students across various gender, programs, and subjects. The aim was to assess teaching quality, curriculum delivery, institutional facilities, and overall satisfaction with the academic environment.

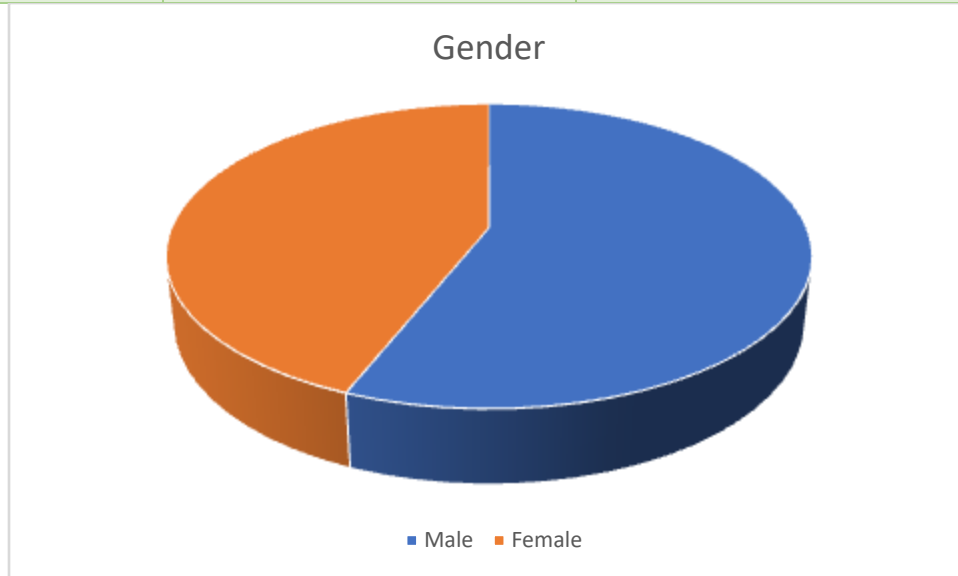
#### Committee for Feedback Collection and Analysis

Committee Member	Designation	Role
Dr. R. KSharma	Principal	Chairperson
Dr. Malay Bharti	IQAC, Coordinator	Advisor
Prof. Amit P. Demta	HOD, Political Science	Feedback Coordinator
Dr. Pappu Kumar Rajak	HOD, Commerce	Member
Mugdha Tiwari	HA	Member
Amit Kumar	Administrative Staff	Technical Support
Student Representative	Final Year UG/PG Student	Member (Student Feedback)

ATTESTED  
  
PRINCIPAL  
Doranda College, Ranchi

## 1. Gender Distribution

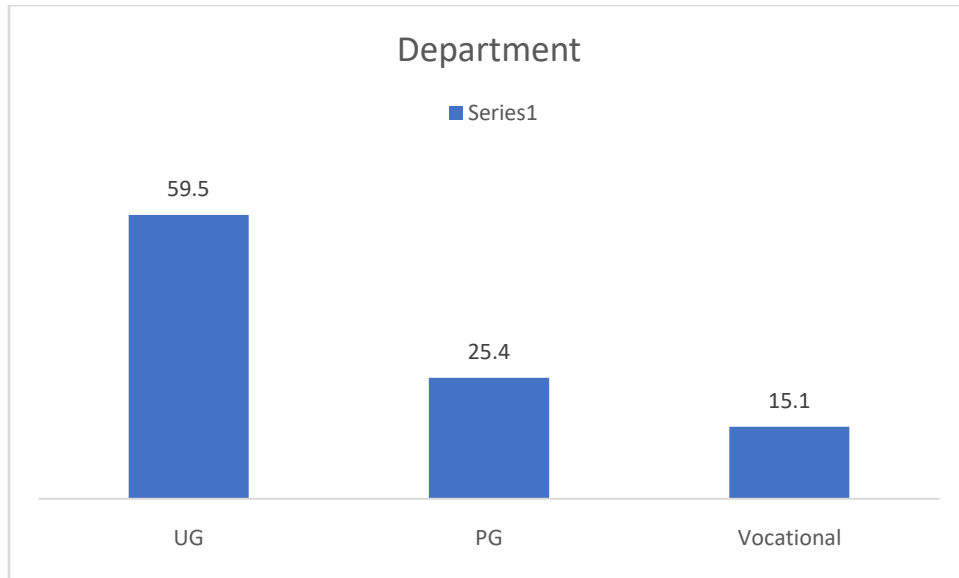
Gender	Frequency	Percent (%)
Male	568	56.1
Female	445	43.9
<b>Total</b>	<b>1013</b>	<b>100.0</b>



## 2. Program

Program	Frequency	Percent (%)
UG	603	59.5
PG	257	25.4
Vocational	153	15.1
<b>Total</b>	<b>1013</b>	<b>100.0</b>

ATTESTED  
*Rajendra*  
PRINCIPAL  
Doranda College, Ranchi



### 3. Subject-Wise Feedback

Detailed feedback was received from students across diverse subjects. The key highlights include:

- **Highest Representation:** History (13.7%), Political Science (9.7%), and Sanskrit (8.9%).
- **Least Representation:** Bengali, Mundari, and Panchparganiya (0.3% each).

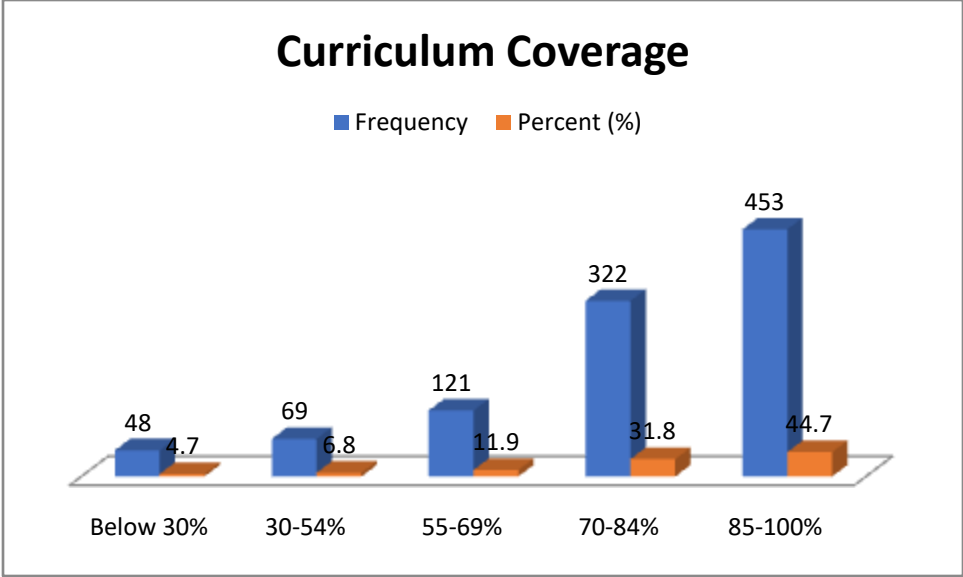
For a full subject-wise breakdown, refer to the annexure.

### 4. Summary of Feedback Metrics

#### 4.1 Curriculum Coverage

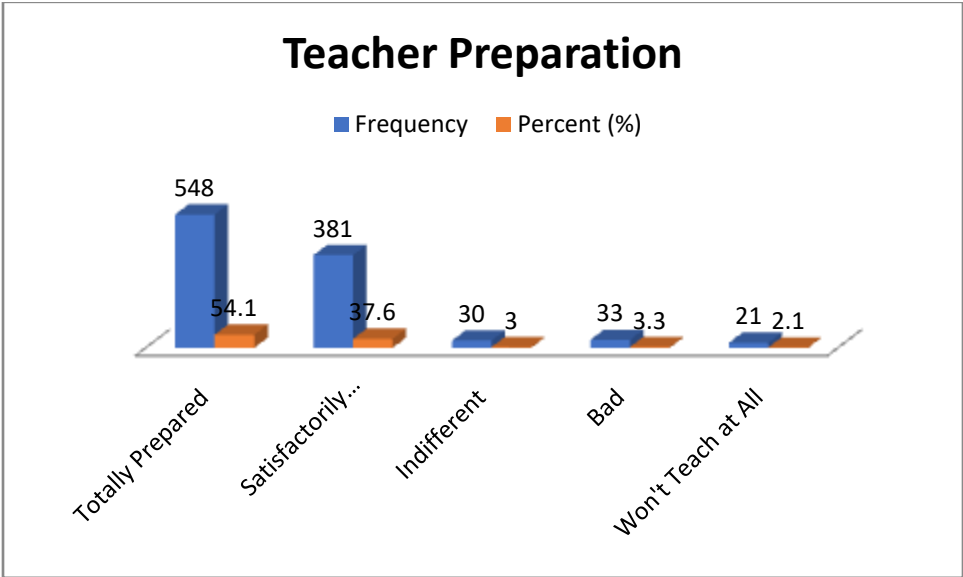
Curriculum Coverage (%)	Frequency	Percent (%)
Below 30%	48	4.7
30-54%	69	6.8
55-69%	121	11.9
70-84%	322	31.8
85-100%	453	44.7


ATTESTED  
  
 PRINCIPAL  
 Doranda College, Ranchi



### 4.2 Teacher Preparation

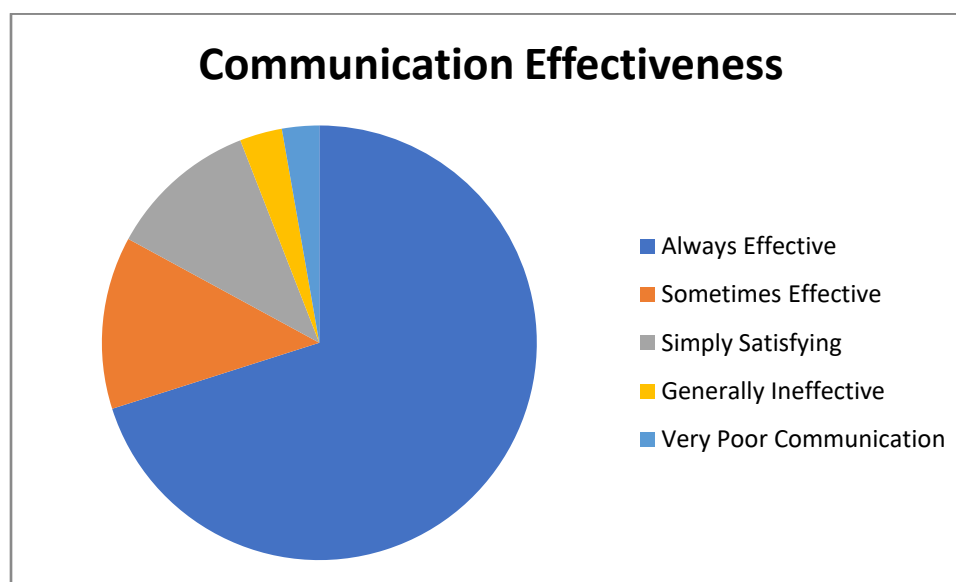
Preparation Level	Frequency	Percent (%)
<b>Totally Prepared</b>	548	54.1
<b>Satisfactorily Prepared</b>	381	37.6
<b>Indifferent</b>	30	3.0
<b>Bad</b>	33	3.3
<b>Won't Teach at All</b>	21	2.1



**ATTESTED**  
  
 PRINCIPAL  
 Doranda College, Ranchi

### 4.3 Communication Effectiveness

Communication Level	Frequency	Percent (%)
Always Effective	710	70.1
Sometimes Effective	130	12.8
Simply Satisfying	113	11.2
Generally Ineffective	32	3.2
Very Poor Communication	28	2.8



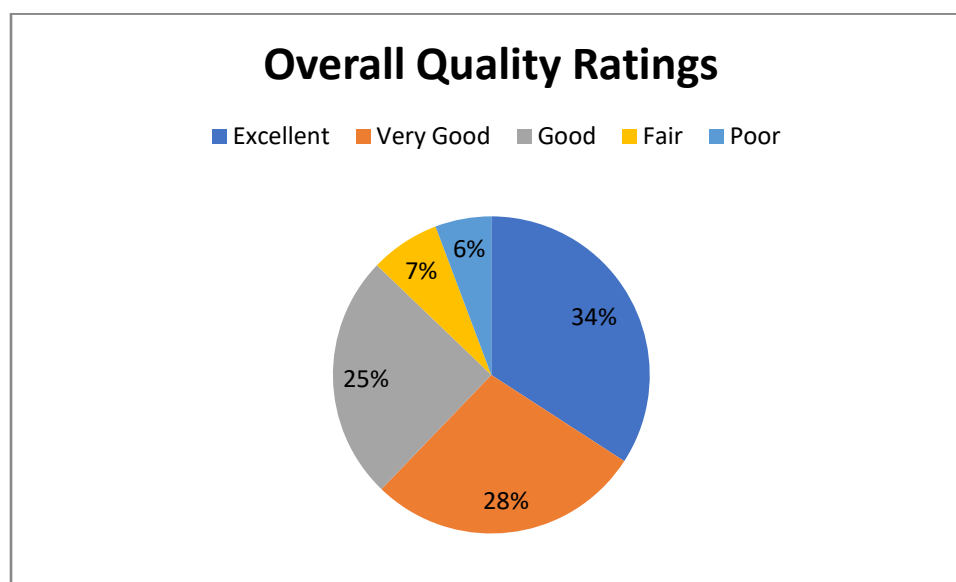
### 4.4 Fairness in Internal Assessments

Fairness (%)	Frequency	Percent (%)
85-100%	569	56.2
70-84%	262	25.9
55-69%	110	10.9
30-54%	44	4.3
Below 30%	28	2.8

**ATTESTED**  
  
 PRINCIPAL  
 Doranda College, Ranchi

## 5. Overall Quality Ratings

Quality	Frequency	Percent (%)
Excellent	346	34.2
Very Good	284	28.0
Good	253	25.0
Fair	72	7.1
Poor	58	5.7



## 6. Recommendations

- Increase ICT Integration:** Only 32.1% reported 85-100% usage of ICT tools by teachers, indicating scope for improvement in technology-enhanced learning.
- Enhance Internship Opportunities:** A moderate 47.2% felt institutional efforts in internships and field visits were always effective, necessitating more proactive initiatives.
- Support for Cognitive Development:** Though 48.4% totally agreed on teaching and mentoring effectiveness, continuous faculty training and mentoring programs are suggested for holistic student development.

ATTESTED  
  
PRINCIPAL  
Doranda College, Ranchi

## Conclusion

The 2023-2024 feedback underscores the robust teaching-learning ecosystem at Doranda College while highlighting areas for growth, particularly in ICT integration and experiential learning opportunities. The institution remains committed to continuous quality improvement in all academic and co-curricular dimensions.



## Annexure:

### Gender

	Frequency	Percent
Male	568	56.1
Female	445	43.9
Total	1013	100.0

### Programme

	Frequency	Percent
UG	603	59.5
PG	257	25.4
Vocational	153	15.1
Total	1013	100.0

### Subject

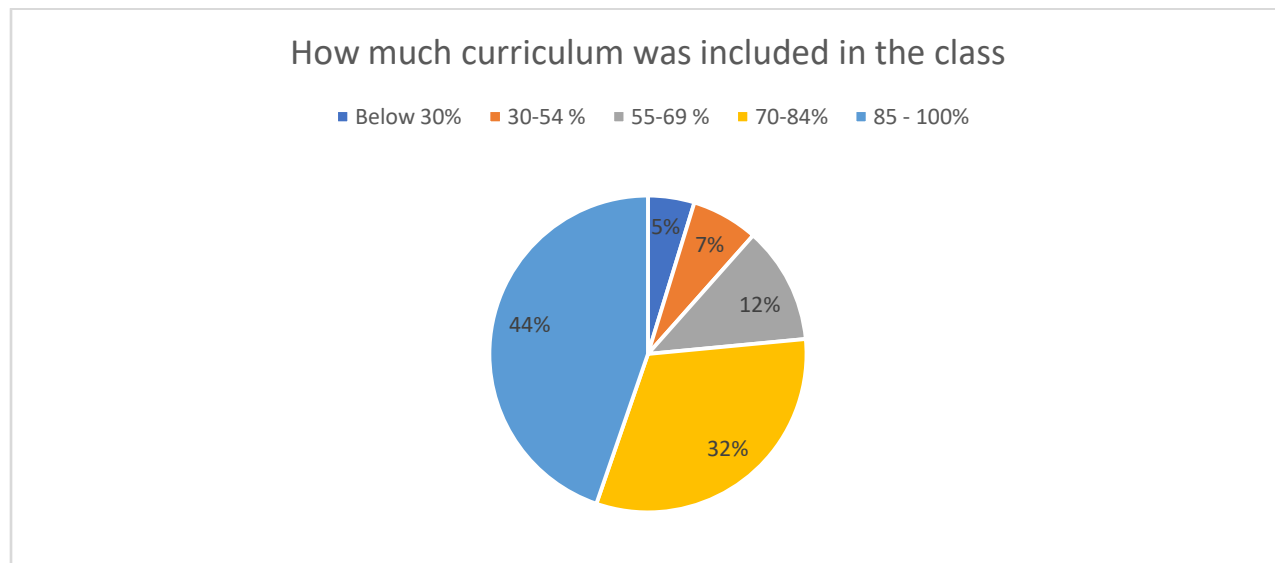
	Frequency	Percent
B. Sc-IT	35	3.5
B.Com	5	.5
B.Ed	11	1.1
BBA	45	4.4
BCA	86	8.5
Bengali	3	.3
Botany	71	7.0
Chemistry	14	1.4
Economics	40	3.9
English	23	2.3
Geography	34	3.4
Hindi	54	5.3
History	139	13.7
Mathematics	34	3.4
MBA	59	5.8
MCA	6	.6
Mundari	3	.3
Nagpuri	8	.8
Panchparganiya	3	.3
Philosophy	7	.7
Physics	61	6.0
Political Science	98	9.7
Psychology	51	5.0
Sanskrit	90	8.9

ATTESTED  
  
PRINCIPAL  
Doranda College, Ranchi

<b>Sociology</b>	16	1.6
<b>Urdu</b>	4	.4
<b>Zoology</b>	13	1.3
<b>Total</b>	1013	100.0

q1\_ How much curriculum was included in the class

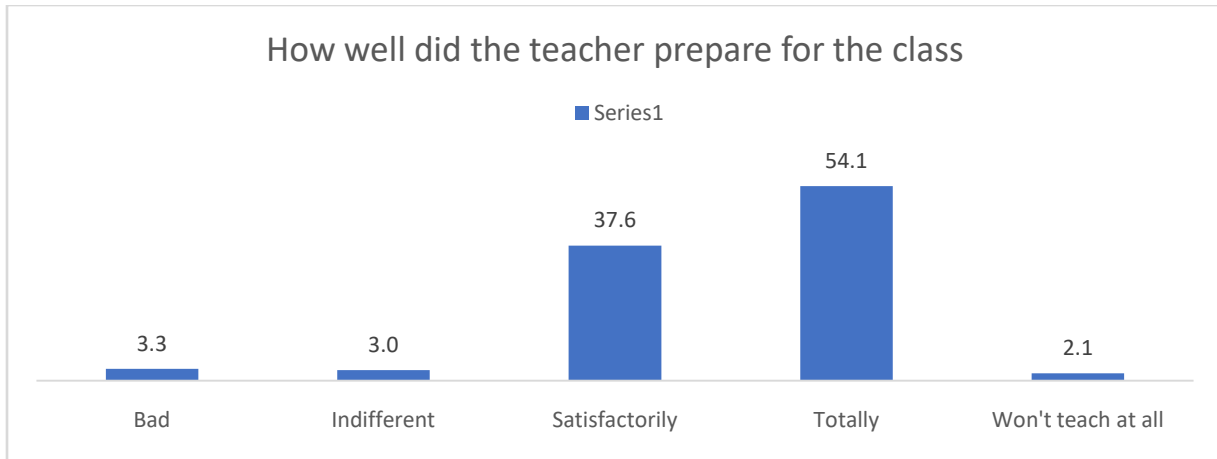
	<b>Frequency</b>	<b>Percent</b>
<b>Below 30%</b>	48	4.7
<b>30-54 %</b>	69	6.8
<b>55-69 %</b>	121	11.9
<b>70-84%</b>	322	31.8
<b>85 - 100%</b>	453	44.7
<b>Total</b>	1013	100.0



q2\_ How well did the teacher prepare for the class

	<b>Frequency</b>	<b>Percent</b>
<b>Bad</b>	33	3.3
<b>Indifferent</b>	30	3.0
<b>Satisfactorily</b>	381	37.6
<b>Totally</b>	548	54.1
<b>Won't teach at all</b>	21	2.1
<b>Total</b>	1013	100.0

**ATTESTED**  
  
**PRINCIPAL**  
 Doranda College, Ranchi



q3\_ How well were the teachers able to communicate

	Frequency	Percent
<b>Always Effective</b>	710	70.1
<b>Generally Ineffective</b>	32	3.2
<b>Simply Satisfying</b>	113	11.2
<b>Sometimes Effective</b>	130	12.8
<b>Very poor communication</b>	28	2.8
<b>Total</b>	1013	100.0

q4\_ Fairness of internal assessment (mid-sem/end sem) process by teachers

	Frequency	Percent
<b>Below 30%</b>	28	2.8
<b>30-54 %</b>	44	4.3
<b>55-69 %</b>	110	10.9
<b>70-84%</b>	262	25.9
<b>85 - 100%</b>	569	56.2
<b>Total</b>	1013	100.0

q5\_ The Institute takes an active interest in promoting internship, student exchange and field visit opportunities for students

	Frequency	Percent
<b>Always Effective</b>	478	47.2
<b>Generally Ineffective</b>	59	5.8
<b>Simply Satisfying</b>	153	15.1
<b>Sometimes Effective</b>	217	21.4
<b>Very Poor</b>	106	10.5
<b>Total</b>	1013	100.0

ATTESTED  
  
 PRINCIPAL  
 Doranda College, Ranchi

q6\_The teaching and mentoring process in your institution helps you with cognitive, social and emotional development

	Frequency	Percent
Agree	343	33.9
Totally agree	490	48.4
Neutral	106	10.5
Disagree	42	4.1
Totally disagree	32	3.2
Total	1013	100.0

q7\_The institution provides many opportunities to learn and grow

	Frequency	Percent
Below 30%	64	6.3
30-54 %	56	5.5
55-69 %	137	13.5
70-84%	310	30.6
85 - 100%	446	44.0
Total	1013	100.0

q8\_Teachers inform you about your expected competencies, course outcomes and program outcomes

	Frequency	Percent
Agree	344	34.0
Totally agree	507	50.0
Neutral	93	9.2
Disagree	33	3.3
Totally disagree	36	3.6
Total	1013	100.0

q9\_Your teacher makes a necessary follow-up with the task assigned to you

	Frequency	Percent
Agree	344	34.0
Totally agree	492	48.6
Neutral	114	11.3
Disagree	35	3.5
Totally disagree	28	2.8
Total	1013	100.0

ATTESTED  
  
 PRINCIPAL  
 Doranda College, Ranchi

q10\_ Teachers explain the concept through examples and applications

	Frequency	Percent
Below 30%	45	4.4
30-54 %	38	3.8
55-69 %	101	10.0
70-84%	289	28.5
85 - 100%	540	53.3
<b>Total</b>	<b>1013</b>	<b>100.0</b>

q11\_ Teachers identify your strengths and encourage you to provide the right level of challenges

	Frequency	Percent
Agree	304	30.0
Totally agree	498	49.2
Neutral	118	11.6
Disagree	50	4.9
Totally disagree	43	4.2
<b>Total</b>	<b>1013</b>	<b>100.0</b>

q12\_ The institution endeavors to involve the students in the monitoring, review and continuous quality improvement of the teaching-learning process

	Frequency	Percent
Always Effective	544	53.7
Generally Ineffective	41	4.0
Simply Satisfying	166	16.4
Sometimes Effective	216	21.3
Very Poor	46	4.5
<b>Total</b>	<b>1013</b>	<b>100.0</b>

q13\_ Institutions teachers use student-centered methods such as experiential learning, participatory learning and problem solving methods to enhance learning experiences

	Frequency	Percent
Agree	331	32.7
Totally agree	446	44.0
Neutral	134	13.2
Disagree	61	6.0
Totally disagree	41	4.0
<b>Total</b>	<b>1013</b>	<b>100.0</b>

ATTESTED  
  
 PRINCIPAL  
 Doranda College, Ranchi

q14\_Teachers encourage you to participate in extra-curricular activities

	Frequency	Percent
Agree	317	31.3
Totally agree	522	51.5
Neutral	90	8.9
Disagree	45	4.4
Totally disagree	39	3.8
Total	1013	100.0

q15\_Efforts are made by the institute teachers to develop soft skills, life skills and employability skills to prepare you for the world of work

	Frequency	Percent
Always Effective	499	49.3
Generally Ineffective	75	7.4
Simply Satisfying	141	13.9
Sometimes Effective	222	21.9
Very Poor	76	7.5
Total	1013	100.0

q16\_What percentage of teachers use ICT equipment's like LCD projectors, multimedia etc. while teaching

	Frequency	Percent
Below 30%	229	22.6
30-54 %	93	9.2
55-69 %	128	12.6
70-84%	238	23.5
85 - 100%	325	32.1
Total	1013	100.0

q17\_Overall quality of teaching-learning process in your institution

	Frequency	Percent
Excellent	346	34.2
Fair	72	7.1
Good	253	25.0
Poor	58	5.7
Very Good	284	28.0
Total	1013	100.0

ATTESTED  
  
 PRINCIPAL  
 Doranda College, Ranchi

A NAAC GRADED

# DORANDA COLLEGE, RANCHI

[A Constituent College of Ranchi University, Ranchi]

## ALUMNI FEEDBACK FORM

Name of the Alumni:

Degree/Course:

Passing Year/ Session:

Nature of Job & Location:

Sl. No	Topics	Rating				
		A	B	C	D	E
1	College Management Support					
2	Teachers Motivation Support					
3	Continually of Meeting of Alumni					
4	Facilities Availability					
5	Opportunities availability to do something for the college					
6	Any specific suggestion for improvement in about 50 words					

A : Excellent

B : Very Good

C : Good

D : Satisfactory

E : Unsatisfactory

Signature of the Alumni

Contact No:

Please send to email: [principal.dorandacollege@gmail.com](mailto:principal.dorandacollege@gmail.com)



A NAAC GRADED

# DORANDA COLLEGE, RANCHI

[A Constituent College of Ranchi University, Ranchi]

## TEACHERS' FEEDBACK

Sl. No	Topics	Rating				
		A	B	C	D	E
1	College Management Support					
2	Freedom to adopt new technique of teaching					
3	Students Response					
4	Parents Response					
5	Research Facilities					
6	Faculty Improvement Programmes					
7	Any other suggestions :					

A : Excellent

B : Very Good

C : Good

D : Satisfactory

E : Unsatisfactory

Signature of the Teacher's

Teachers Name:

Department:



A NAAC GRADED

# DORANDA COLLEGE, RANCHI

[A Constituent College of Ranchi University, Ranchi]

## STUDENT FEEDBACK FORM

Name of the Student:

Degree/Course:

Session:

Roll No:

Sl. No	Topics	Rating				
		A	B	C	D	E
1	Teaching Standard					
2	Teaching Environment					
3	Teachers Behaviour					
4	Mentor Support					
5	Non Teaching Behaviour					
6	Teaching Methodology					
7	Library Facilities					
8	Laboratory Facilities					
9	Extra Curricular Activities					
10	Co-curricular Activities					
11	Facility availability for serving society or Nation (e.g NSS, NCC)					
12	Infrastructural Facilities					
13	Safety and security in the campus					
14	Administrative Support					
15	Placement Facilities					
16	Any other comments:					

A : Excellent

B : Very Good

C : Good

D : Satisfactory

E : Unsatisfactory



Signature of the Student

A NAAC GRADED

# DORANDA COLLEGE, RANCHI

[A Constituent College of Ranchi University, Ranchi]

## PARENT FEEDBACK FORM

Name of the Student:

Degree/Course:

Session:

Roll No:

Sl. No	Topics	Rating				
		A	B	C	D	E
1	College Management Support					
2	Teaching Standard					
3	Extracurricular activities (Cultural, Sports, NSS)					
4	Laboratory facilities/ICT Lab					
5	Conduct of Internal Exam (Mid-Sem)					
6	Amenities such as WiFi, Library, well equipped classroom, Infflibnet					
7	Affordable fee structure					
8	Any other comments					

A : Excellent

B : Very Good

C : Good

D : Satisfactory

E : Unsatisfactory

Signature of the Parent's

Contact No:



# Students Feedback Form: Doranda College, Ranchi

Student's Feedback Form

\* Indicates required question

1. Email \*

---

2. Student Name\* \*

---

---

---

---

---

3. University Roll Number\* \*

---

---

---

---

---

4. Gender \*

Mark only one oval.

Male

Female



5. Mobile Number\* \*

---

6. Department\* \*

*Mark only one oval.*

- UG
- PG
- VOCATIONAL
- Certificate Course

ATTESTED  
  
PRINCIPAL  
Doranda College, Ranchi

7. Subject \*

Mark only one oval.

- Bengali
- Economics
- English
- Geography
- Hindi
- History
- Kurukh
- Kurmali
- Mundari
- Nagpuri
- Panchparganiya
- Philosophy
- Political Science
- Psychology
- Sanskrit
- Sociology
- Urdu
- Botany
- Chemistry
- Mathematics
- Physics
- Zoology
- B.Com
- BCA
- B. Sc-IT
- BBA
- B.Ed
- M.Com

ATTESTED  
  
PRINCIPAL  
Doranda College, Ranchi

- MCA
- Amanat

8. Session\* \*

*Mark only one oval.*

- 2016-2019
- 2016-2018
- 2017-2020
- 2017-2019
- 2018-2021
- 2018-2020
- 2019-2022
- 2019-2021
- 2020-2023
- 2020-2022
- 2021-2024
- 2021-2023
- 2022-2026
- 2022-2024
- 2023-2025
- 2023-2027
- 2023-2026
- 2022-2025
- 2024-2026
- 2024-2028
- 2024-2027

ATTESTED  
  
PRINCIPAL  
Doranda College, Ranchi

9. 1.How much curriculum was included in the class? कक्षा में कितना पाठ्यक्रम पूर्ण होता था ? \*

Mark only one oval.

- 85 to 100%
- 70 to 84%
- 55 to 69%
- 30 to 54%
- Below 30%

10. 2.How well did the teacher prepare for the class? शिक्षक ने कक्षा के लिए कितनी अच्छी तैयारी की? \*

Mark only one oval.

- Totally पूरी तरह से
- Satisfactorily संतोषजनक ढंग से
- Bad खराब
- Indifferent उदासीन
- Won't teach at all बिलकुल नहीं पढ़ाया गया

11. 3.How well were the teachers able to communicate? शिक्षक कितनी अच्छी तरह संवाद(बात-चीत) करने में सक्षम थे? \*

Mark only one oval.

- Always Effective हमेशा प्रभावी
- Sometimes Effective कभी-कभी प्रभावी
- Simply Satisfying बस संतोषजनक
- Generally Ineffective आम तौर पर अप्रभावी
- Very poor communication बहुत खराब संवाद(बात-चीत)

ATTESTED  
  
PRINCIPAL  
Doranda College, Ranchi

12. 4.Fairness of internal assessment (mid-sem/end sem) process by teachers ? \*  
शिक्षकों द्वारा आंतरिक मूल्यांकन (मिड सेम / एंड सेम) प्रक्रिया की निष्पक्षता ?

Mark only one oval.

- 85 to 100% 85 से 100%
- 70 to 84% 70 से 84%
- 55 to 69% 55 से 69%
- 30 to 54% 30 से 54%
- Below 30% 30% से नीचे

13. 5.The Institute takes an active interest in promoting internship, student exchange and field visit opportunities for students संस्थान छात्रों के लिए इंटरनशिप, छात्रों का आदान प्रदान और क्षेत्र भ्रमण के अवसरों को बढ़ावा देने में सक्रिय रुचि लेता है ? \*

Mark only one oval.

- Always Effective हमेशा प्रभावी
- Sometimes Effective कभी-कभी प्रभावी
- Simply Satisfying बस संतोषजनक
- Generally Ineffective आम तौर पर अप्रभावी
- very poor बहुत खराब

14. 6.The teaching and mentoring process in your institution helps you with cognitive, social and emotional development. \* आपके संस्थान में शिक्षण और सलाह देने की प्रक्रिया आपको ज्ञान-संबंधी विकास, सामाजिक विकास और भावनात्मक विकास में मदद करती है? \*

Mark only one oval.

- Totally agree पूरी तरह सहमत
- agree सहमत
- Neutral तटस्थ
- disagree असहमत
- Totally disagree पूरी तरह असहमत

ATTESTED  
  
PRINCIPAL  
Doranda College, Ranchi

15. 7.The institution provides many opportunities to learn and grow. संस्था सीखने और बढ़ने के कई अवसर प्रदान करती है? \*

Mark only one oval.

- 85% to 100% 85 से 100%
- 70 to 84% 70 से 84%
- 55 to 69% 55 से 69%
- 30 to 54% 30 से 54%
- Below 30% 30% से नीचे

16. 8.Teachers inform you about your expected competencies, course outcomes and program outcomes. शिक्षक आपको आपकी अपेक्षित योग्यताओं, पाठ्यक्रम परिणामों और कार्यक्रम के परिणामों के बारे में सूचित करते हैं? \*

Mark only one oval.

- Totally agree पूरी तरह सहमत
- agree सहमत
- Neutral तटस्थ
- disagree असहमत
- Totally disagree पूरी तरह असहमत

17. 9.Your teacher makes a necessary follow-up with the task assigned to you. आपके शिक्षक आपको सौंपे गए कार्य के सन्दर्भ में आगे की आवश्यक कार्रवाई करते हैं? \*

Mark only one oval.

- Totally agree पूरी तरह सहमत
- agree सहमत
- Neutral तटस्थ
- disagree असहमत
- Totally disagree पूरी तरह असहमत

ATTESTED  
  
PRINCIPAL  
Doranda College, Ranchi

18. 10. Teachers explain the concept through examples and applications. शिक्षक उदाहरणों और अनुप्रयोगों के माध्यम से अवधारणा को स्पष्ट करते हैं? \*

Mark only one oval.

- 85 to 100% 85 से 100%
- 70 to 84% 70 से 84%
- 55 to 69% 55 से 69%
- 30 to 54% 30 से 54%
- Below 30% 30% से नीचे

19. 11. Teachers identify your strengths and encourage you to provide the right level of \* challenges शिक्षक आपकी ताकत की पहचान करते हैं और आपको चुनौतियों का सही स्तर प्रदान करने के लिए प्रोत्साहित करते हैं ?

Mark only one oval.

- Totally agree पूरी तरह सहमत
- agree सहमत
- Neutral तटस्थ
- disagree असहमत
- Totally disagree पूरी तरह असहमत

ATTESTED  
  
PRINCIPAL  
Doranda College, Ranchi

20. 12. The institution endeavors to involve the students in the monitoring, review and continuous quality improvement of the teaching-learning process शिक्षण संस्था सीखने-सिखाने की प्रक्रिया की निगरानी, समीक्षा और निरंतर गुणवत्ता सुधार में छात्रों को शामिल करने का प्रयास करती है ?

Mark only one oval.

- Always Effective हमेशा प्रभावी  
 Sometimes Effective कभी-कभी प्रभावी  
 Simply Satisfying बस संतोषजनक  
 Generally ineffective आम तौर पर अप्रभावी  
 very poor बहुत खराब

21. 13. Institutions/teachers use student-centered methods such as experiential learning, participatory learning and problem solving methods to enhance learning experiences. संस्थान/शिक्षक सीखने के अनुभवों को बढ़ाने के लिए प्रायोगिक शिक्षण, सहभागी शिक्षण और समस्या समाधान पद्धति जैसे छात्र केंद्रित तरीकों का उपयोग करते हैं?

Mark only one oval.

- Totally agree पूरी तरह सहमत  
 agree सहमत  
 Neutral तटस्थ  
 disagree असहमत  
 Totally disagree पूरी तरह असहमत

ATTESTED  
  
PRINCIPAL  
Doranda College, Ranchi

22. 14. Teachers encourage you to participate in extra-curricular activities शिक्षक आपको पाठ्येतर-गतिविधियों (पढ़ाई के अलावा अन्य गतिविधियों) में भाग लेने के लिए प्रोत्साहित करते हैं? \*

Mark only one oval.

- Totally agree पूरी तरह सहमत
- agree सहमत
- Neutral तटस्थ
- disagree असहमत
- Totally disagree पूरी तरह असहमत

23. 15. Efforts are made by the institute/teachers to develop soft skills, life skills and employability skills to prepare you for the world of work. आपको रोज़गार के लिए तैयार करने के लिए संस्थान/शिक्षकों द्वारा सॉफ्ट स्किल, जीवन कौशल और रोज़गार योग्यता कौशल विकसित करने का प्रयास किया जाता है? \*

Mark only one oval.

- Always Effective हमेशा प्रभावी
- Sometimes Effective कभी-कभी प्रभावी
- Simply Satisfying बस संतोषजनक
- Generally Ineffective आम तौर पर अप्रभावी
- very poor बहुत खराब

ATTESTED  
  
PRINCIPAL  
Doranda College, Ranchi

24. 16. What percentage of teachers use ICT equipments like LCD projectors, multimedia etc. while teaching कितने प्रतिशत शिक्षक पढ़ाते समय आईसीटी उपकरण जैसे एलसीडी प्रोजेक्टर, मल्टीमीडिया आदि का उपयोग करते हैं? \*

Mark only one oval.

- 85 to 100% 85 से 100%
- 70 to 84% 70 से 84%
- 55 to 69% 55 से 69%
- 30 to 54% 30 से 54%
- Below 30% 30% से नीचे

25. 17. Overall quality of teaching-learning process in your institution आपके संस्थान में सीखने-सिखाने की प्रक्रिया की कुल गुणवत्ता? \*

Mark only one oval.

- . Excellent उत्कृष्ट
- very good बहुत अच्छा
- good अच्छा
- Fair उचित
- Poor खराब

26. Give three observations/suggestions (in words) to improve the overall teaching-learning experience in your institution (write in your own words) अपने संस्थान में सीखने-सिखाने की प्रक्रिया के अनुभव को बेहतर बनाने के लिए तीन आवश्यक विचार /सुझाव दें (अपने शब्दों में लिखें) \*

---

---

---

---

---

ATTESTED  
  
PRINCIPAL  
Doranda College, Ranchi

This content is neither created nor endorsed by Google.

## Google Forms

ATTESTED  
  
PRINCIPAL  
Doranda College, Ranchi